

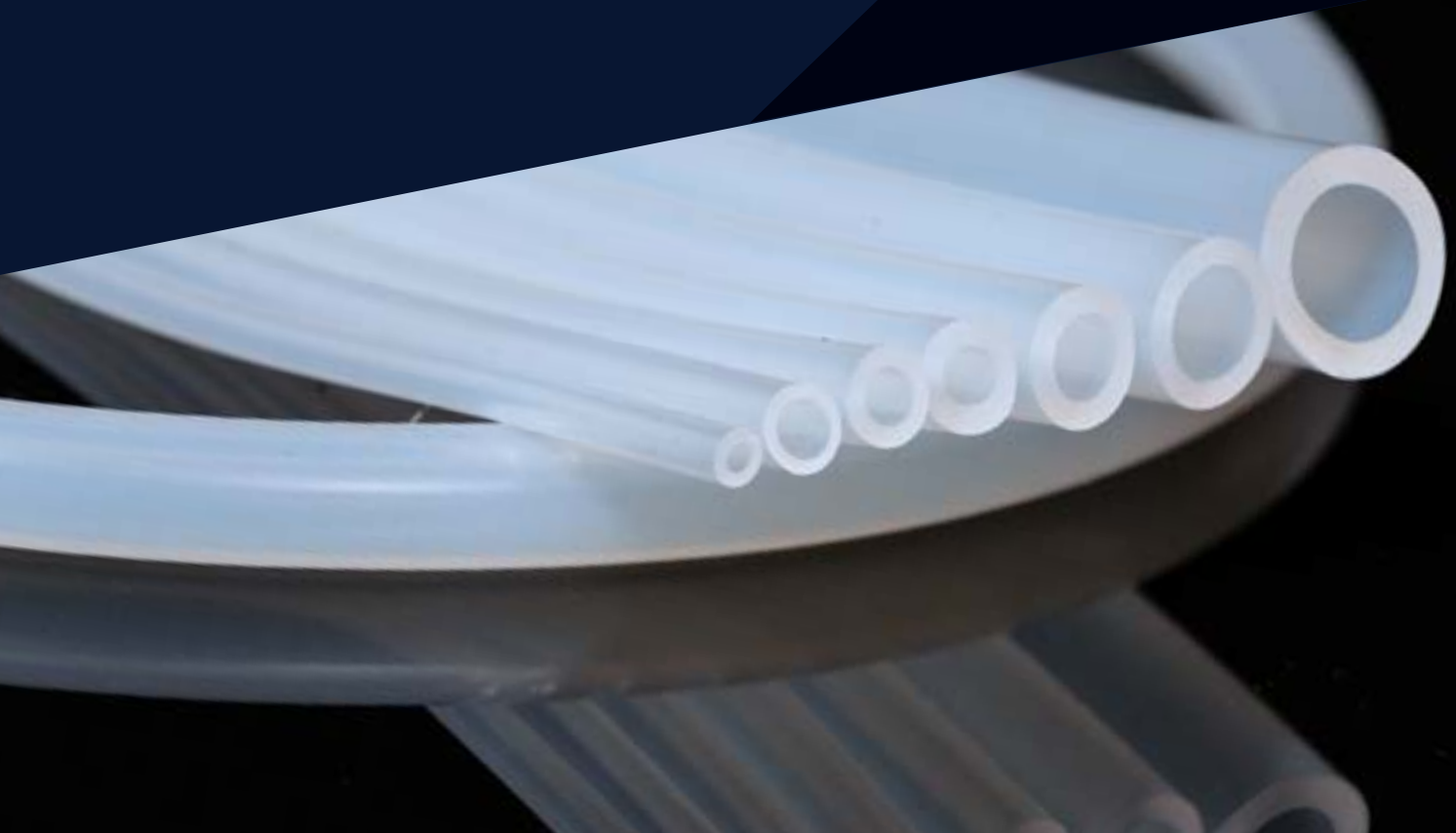


BEYOND BOUNDARIES®

EBOOK

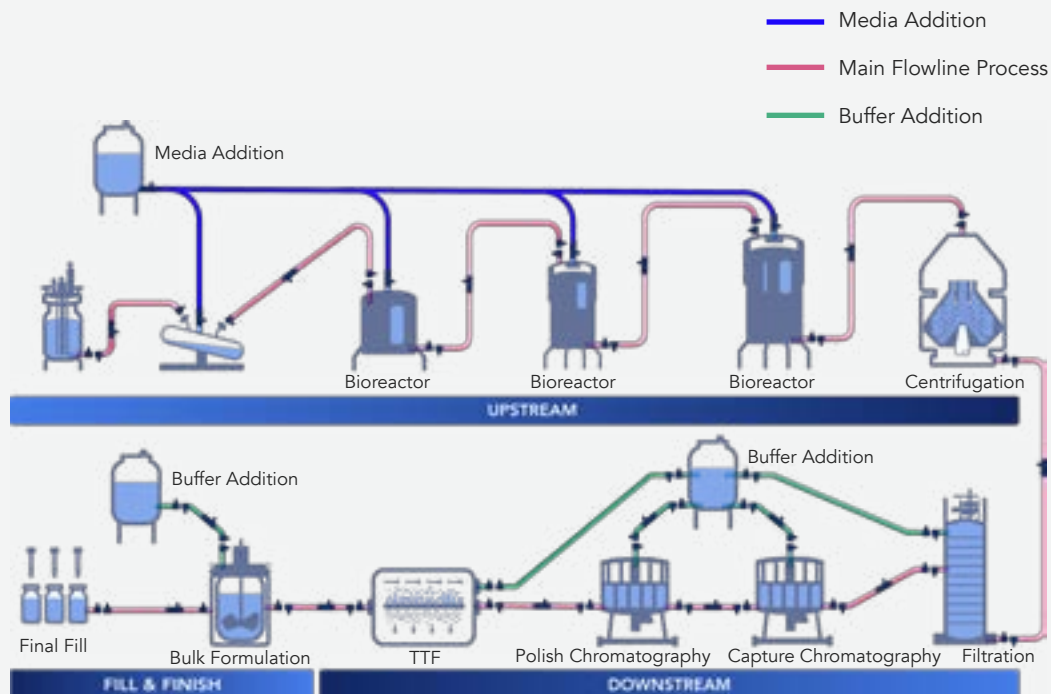
# The Value of Choosing the Right Tubing

- ✓ Discover the advantages of platinum-cured silicone tubing
- ✓ Learn how to streamline and secure biomanufacturing processes
- ✓ Understand what quality tubing looks like in action



# Tubing Applications Throughout Manufacturing

It might sound minuscule compared to other biomanufacturing systems leveraged, but tubing connects the entirety of your operations. Without it, there'd be no aseptic means of flowing product. Therefore, choosing suitable tubing for your application is critical to the workflow and results, as it touches every point in the process.



# Contents

Comprehensive Liquid Handling Portfolio.....	4
Platinum-Cured Silicone Tubing.....	5
The Right Tubing in Action.....	6
The ILC Dover Difference... ..	7

# ILC Dover's Comprehensive Liquid Handling Portfolio

Store, transfer, and sample bioprocess fluids while maintaining sterility, performing at peak levels, and preventing product leakage.



## Single-Use Liquid Bags

### High Performance

- Vetted Renolit 9101 film
- Optimized design

### Comprehensive Customization

- Size (50mL–200L)
- Any component, any material, any vendor

### High-Quality Standards

- Vetted raw materials
- Robust quality control
- Holistic quality assurance program



## Single-Use Fluid Transfer Assemblies

### Open Architecture Model

- Any part, any vendor
- Unique or ILC Dover design

### Fast Turnaround

- Two-day design turnaround
- Short lead time with standard components

### Expansive Component Library

- 600+ approved components
- 100+ parts with dual sources
- Self-manufacture components



## Platinum-Cured Silicone Tubing

### Superior Performance

- Durable
- Biocompatible
- Low E&L profile

### Raw Material Supply

- Long-term agreements

### Innovative Formula

- Ultra-high purity raw materials
- Simple chemical components
- No organic stabilizer and plasticizer

## Platinum-Cured Silicone Tubing

ILC Dover's platinum-cured silicone tubing was designed and validated for the high quality, purity, and performance requirements of biopharmaceutical fluid transfer processes.

This type of tubing offers exceptional purity and clarity as well as minimal leaching of byproducts. Platinum catalysts modify the crosslink density of the silicone polymer, resulting in superior physical properties, including ultra-smooth surfaces that minimize the growth and presence of bacteria.

ILC Dover specializes in crafting robust solutions for equally robust products, meaning rugged and reliable tubing that passes validated protocols and quality control procedures for continuous containment.

*Available in bulk or assembled on single-use fluid transfer assemblies and liquid bags.*

### Typical Applications

- Cell culture handling
- Cell growth production and harvest systems
- Production filtration and chromatography
- Buffer and media preparation
- Single-use fluid transfer assemblies
- Tubing and bag manifolds
- Filling and sampling operations
- Laboratory use

## The Right Tubing in Action

Where product integrity is paramount, silicone tubing must deliver more than strength.

**Ultra-High Purity Formula** → Low leachables and extractables to maintain **complete fluid integrity**

**Inner Wall Smoothness** → Reduced particulate entrapment

**Material Formulation & Durability** → Over 120-hour pump life, reduced downtime, and low changeover costs

**Raw Materials Assurance** → Sample availability, delivery consistency, and **2–3-week lead time** for standard components



## The ILC Dover Difference

As a total solutions provider, ILC Dover is constantly strengthening and developing its PharmBio product portfolio. We provide not only biocompatible silicone tubing but also cGMP raw materials, fluid transfer assemblies, bioprocess containers, and beyond.

We're known for the craftsmanship of our powder containment systems. That same expertise engineered and expanded our line of liquid containment solutions—used in storing and transferring raw and intermediate fluids in upstream processing, downstream processing, and fill/finish activities.

As our legacy evolves, containment remains our top priority.



**Compliance and regulatory adherence**



**Proven solutions and track record**



**Industry-vetted and tested products**



**Superior customization capabilities**



**Accelerated turnaround time**



**Simplified vendor management**

## BEYOND BOUNDARIES®

ILC Dover is a world-leader in the innovative design and production of engineered flexible protective solutions for pharmaceutical and biopharmaceutical, flood protection, personal protection, bulk packaging, and aerospace industries. Our customers will attest to our relentless dedication to high value products, advanced technology, and responsive service, as our visionary flexible protective solutions have improved efficiency while safeguarding people, product, and infrastructure in hazardous conditions since 1947.

**Contact ILC Dover for a consultation and to run through our simple pump life 'Tubing Calculator' to see how our solution fills your needs.**



ILC Dover LP  
One Moonwalker Road  
Frederica, DE 19946 USA  
+1.302.335.3911  
+1.800.631.9567  
[customer\\_service@ilcdover.com](mailto:customer_service@ilcdover.com)

**[www.ilcdover.com](http://www.ilcdover.com)**